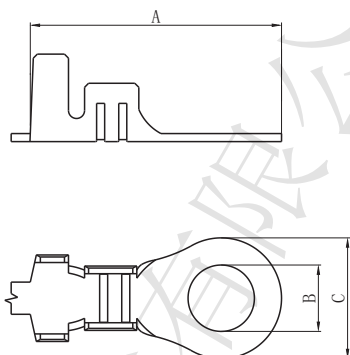
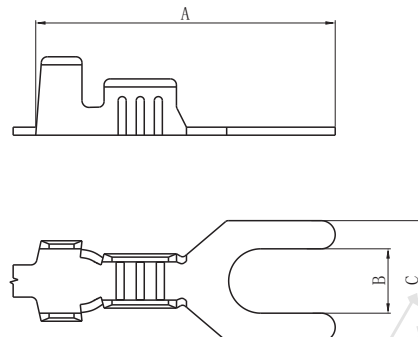


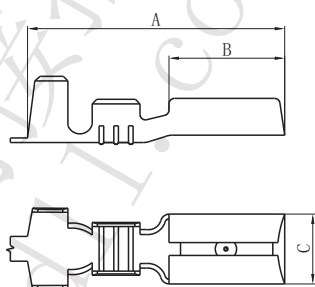
□ 接地片(环形)



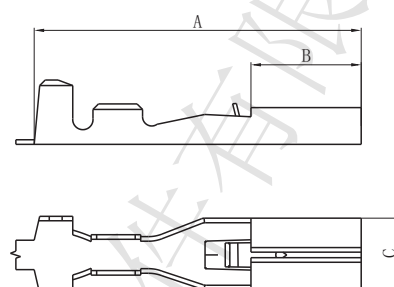
□ 接地片(叉形)



□ 110直插端子

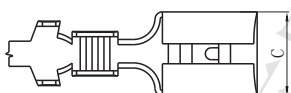
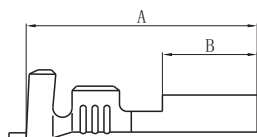


□ 110直插带锁端子

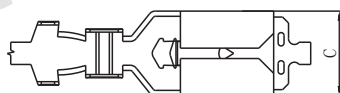
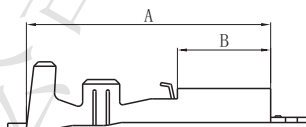


Model No. (型号)	Applicable wire (适用线规)		Material (材料)	Plating (电镀)	Dimensions (尺寸mm)			Tab (适配插片)	Qty/reel (数量/盘)
	mm ²	AWG#			A	B	C		
3. 2X6. 0X0. 4 接地片(环形)	DL3260422T	1.30~2.00	16~14	Matte plated (镀亚光)	12.5	φ3.2	φ6.0	/	10000
4. 2X6. 8X0. 5 接地片(环形)	DL4268522T	1.30~2.00	16~14		16.9	φ4.2	φ6.8	/	8000
4. 3X7. 5X0. 5 接地片(环形)	DL4375522T	0.80~2.00	18~14		16.3	φ4.3	φ7.5	/	7500
5. 3X8. 5X0. 5 接地片(环形)	DL5385522T	0.80~2.00	18~14		19.4	φ5.3	φ8.5	/	7000
3. 2X6. 0X0. 4 接地片(叉形)	DL3260422T	0.50~1.30	20~16		15.0	3.2	6.0	/	10000
5. 2X8. 2X0. 6 接地片(叉形)	DL5282622T	1.30~3.30	16~12		17.4	5.2	8.2	/	3000
110直插端子	DL1104121T	0.20~0.80	24~18	Tin plated (镀锡)	14.0	6.3	3.8	4. 8X0. 5 4. 8X0. 8	15000
110直插带锁端子	DL1103221T	0.80~2.00	18~14		17.7	6.0	3.8	4. 8X0. 5 4. 8X0. 8	15000

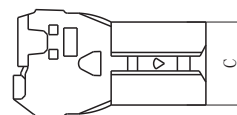
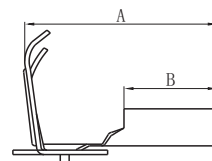
□ 187直插端子



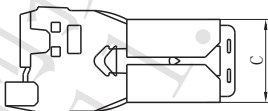
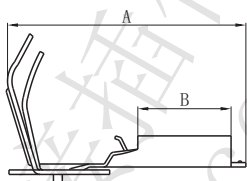
□ 187直插带锁端子



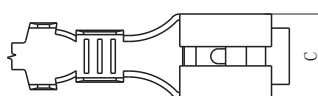
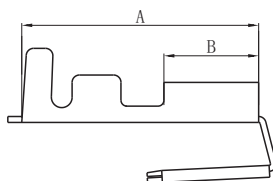
□ 187旗型端子



□ 187旗型带锁端子

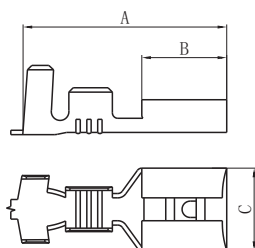


□ 187直插肩背端子

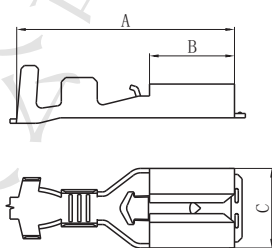


Model No. (型号)		Applicable wire (适用线规)		Material (材料)	Plating (电镀)	Dimensions (尺寸mm)			Tab (适配插片)	Qty/reel (数量/盘)	
		mm ²	AWG#			A	B	C			
187直插低脚端子	DL1871122T	0.22~0.50	24~20	Brass (黄铜)	Matte plated (镀亚光)	15.3	6.4	5.7	4.8X0.5 4.8X0.8	10000	
187直插中脚端子	DL1871222T	0.50~1.30	20~16			15.3	6.4	5.7	4.8X0.5 4.8X0.8	10000	
187直插高脚端子	DL1871322T	1.30~2.00	16~14			15.3	6.4	5.7	4.8X0.5 4.8X0.8	8000	
187直插带锁低脚端子	DL1872121T	0.30~0.80	22~18		Tin plated (镀锡)	17.4	6.3	5.7	4.8X0.5 4.8X0.8	1000	
187直插带锁中脚端子	DL1872221T	0.80~1.30	18~16			17.4	6.3	5.7	4.8X0.5 4.8X0.8	1000	
187旗型端子	DL1873222T	0.50~2.00	20~14		Matte plated (镀亚光)	13.0	6.4	5.6	4.8X0.5 4.8X0.8	6000	
187旗型带锁端子	DL1874222T	0.75~2.00	18~14			Tin plated (镀锡)	16.1	6.3	5.6	4.8X0.5 4.8X0.8	6000
187直插肩背端子	DL1875222T	0.80~2.00	18~14				Matte plated (镀亚光)	16.6	6.2	5.7	4.8X0.5 4.8X0.8

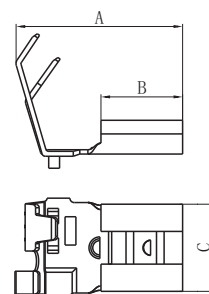
□ 250直插端子



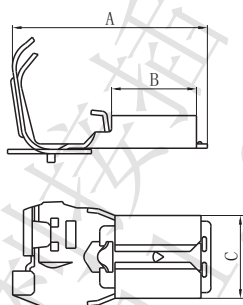
□ 250直插带锁端子



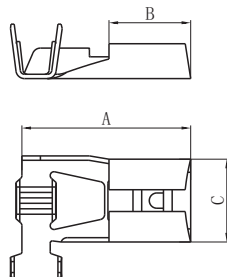
□ 250旗型端子



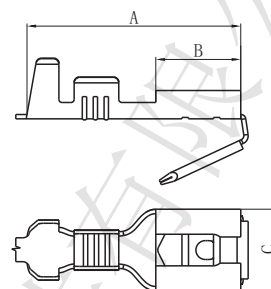
□ 250旗型带锁端子



□ 250旗型双包端子

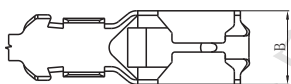
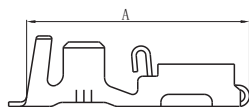


□ 250直插肩背端子

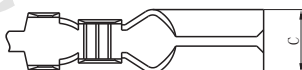
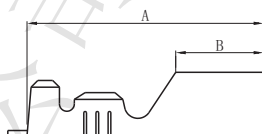


Model No. (型号)		Applicable wire (适用线规)		Material (材料)	Plating (电镀)	Dimensions (尺寸mm)			Tab (适配插片) (数量/盘)	Qty/reel (数量/盘)
		mm ²	AWG#			A	B	C		
250直插低脚端子	DL2501122T	0.50~1.30	20~16	Brass (黄铜)	Matte plated (镀亚光)	19.2	7.8	7.6	6.3X0.8	7000
250直插中脚端子	DL2501222T	0.80~2.00	18~14			19.2	7.5	7.6	6.3X0.8	6000
250直插高脚端子	DL2501322T	2.00~5.20	14~10			19.9	7.8	7.5	6.3X0.8	5000
250直插带锁低脚端子	DL2502121T	0.30~0.80	22~18		Tin plated (镀锡)	19.8	7.8	7.3	6.3X0.8	5000
250直插带锁中脚端子	DL2502221T	0.80~2.00	18~14			19.9	7.8	7.6	6.3X0.8	5000
250直插带锁高脚端子	DL2502321T	2.00~5.20	14~10			19.2	7.8	7.6	6.3X0.8	5000
250旗型端子	DL2503222T	0.80~2.00	18~14		Matte plated (镀亚光)	15.3	7.5	8.0	6.3X0.8	4000
250旗型带锁端子	DL2504221T	0.80~2.00	18~14			17.9	7.9	7.6	6.3X0.8	4000
250旗型双包端子	DL2505222T	0.50~1.25	20~16		Matte plated (镀亚光)	15.5	7.5	7.6	6.3X0.8	4000
250直插肩背端子	DL2506222T	0.80~2.00	18~14			19.6	7.8	7.5	6.3X0.8	3500

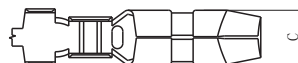
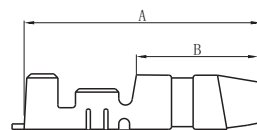
□ FJ250端子



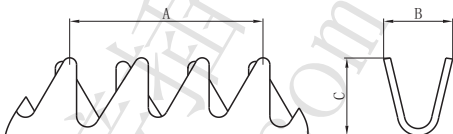
□ 3.96子弹头母端



□ 3.96子弹头公端

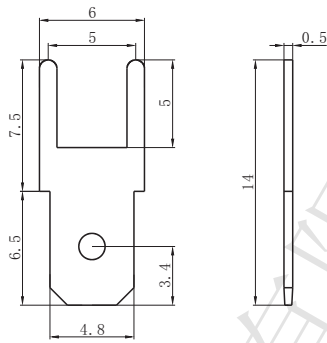


□ 齿形端子

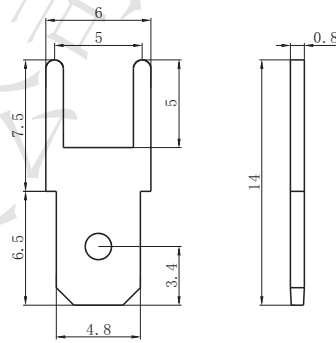


Model No. (型号)	Applicable wire (适用线规)	Material (材料)		Plating (电镀)	Dimensions (尺寸mm)			Tab (适配插片)	Qty/reel (数量/盘)
		mm ²	AWG#		A	B	C		
FJ250端子	DL2507222T	3.30~5.20	12~10	Matte plated (镀亚光)	22.3	7.3	/	6.3X0.8	1000
3.96子弹头母端	DL3961321PT	1.25~2.00	16~14	Tin plated (镀锡)	17.7	6.5	φ4.7	/	10000
3.96子弹头公端	DL3961221RT	0.50~0.80	20~18	Tin plated (镀锡)	17.6	9.0	φ4.0	/	10000
小齿形端子	DL0210021T	0.05~0.13	30~26	/	7	2.1	2.4	/	80000
大齿形端子	DL0210121T	0.08~0.20	28~24	/	7	2.5	2.8	/	100000

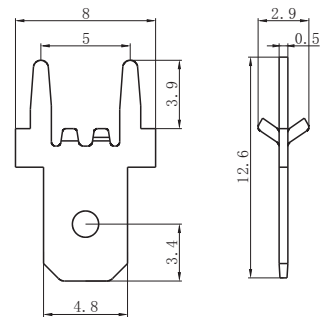
□ 187插片(0.5)



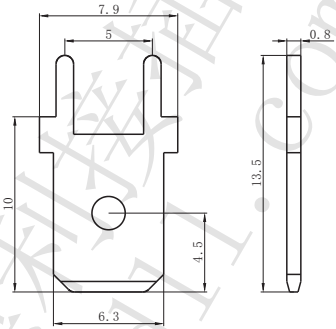
□ 187插片(0.8)



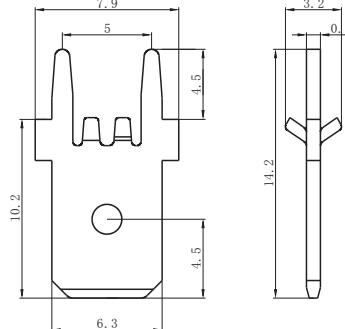
□ 187四脚插片



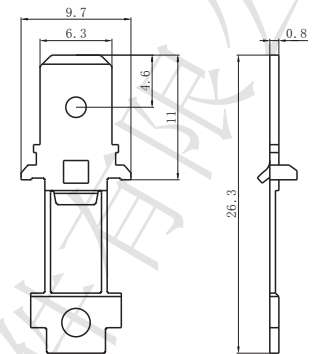
□ 250插片(0.8)



□ 250四脚插片(0.8)

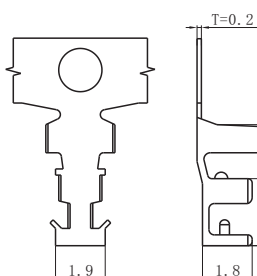


□ 250单插片编带

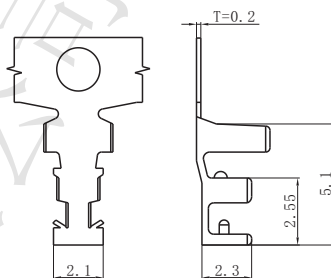


Model No. (型号)	Material (材料)	Plating (电镀)	Model No. (型号)	Material (材料)	Plating (电镀)
187插片(0.5)	Brass (黄铜)	Tin plated (镀锡)	250插片(0.8)	Brass (黄铜)	Tin plated (镀锡)
187插片(0.8)	Brass (黄铜)	Tin plated (镀锡)	250四脚插片(0.8)	Brass (黄铜)	Tin plated (镀锡)
187四脚插片	Brass (黄铜)	Tin plated (镀锡)	250单插片编带	Brass (黄铜)	Tin plated (镀锡)

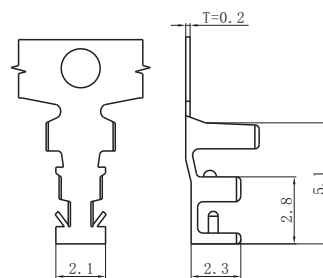
□ 1411基板端子



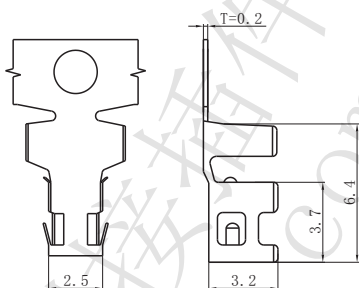
□ 1401基板端子



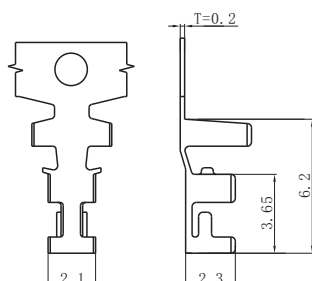
□ 1819基板端子



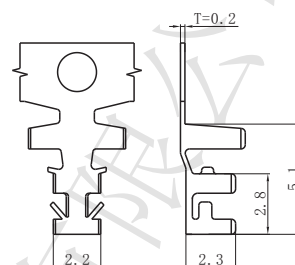
□ 10183基板端子



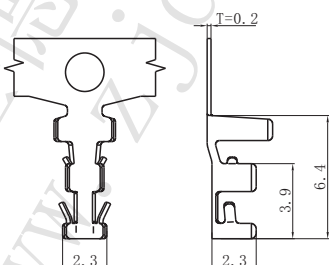
□ H11807基板端子



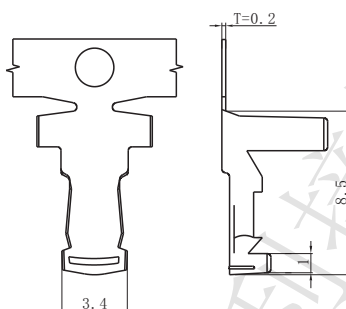
□ H1818PS基板端子



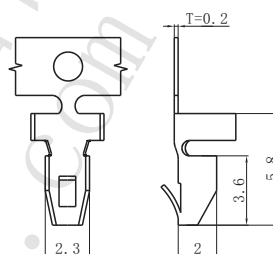
□ 1.8基板端子



□ 8.5基板端子

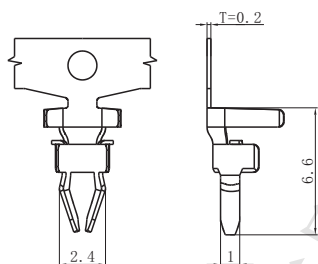


□ SIN-FD-T

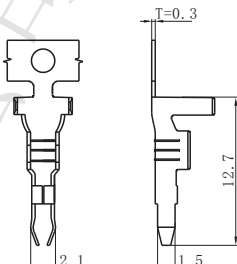


Model No. (型号)		Applicable wire (适用线规)		Material (材料)	Plating (电镀)	Qty/reel (数量/盘)
		mm ²	AWG#			
1411基板端子	DL014111T	0.10~0.30	26~22	Phosphor bronze (磷青铜)	Tin plated (镀锡)	7000
1401基板端子	DL014011T	0.30~0.80	22~18			7000
1819基板端子	DL018191T	0.30~0.80	22~18			7000
10183基板端子	DL101831T	0.30~1.30	22~16			6000
H11807基板端子	DL108071T	0.10~0.50	26~20			6000
H1818PS基板端子	DL118181T	0.30~0.80	22~18			6000
1.8基板端子	DL018001T	0.10~0.50	26~20	Brass (黄铜)	6000	
8.5基板端子	DL085001T	0.80~2.00	18~14		2500	
SIN-FD-T	DLSINF11T	0.30~1.80	22~18	Phosphor bronze (磷青铜)		6000

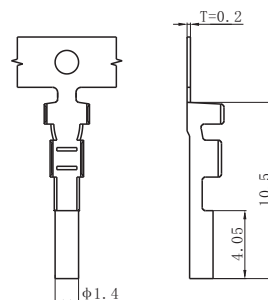
□ SIN-F-T



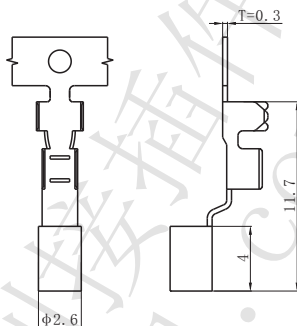
□ SIN-21T-1.8



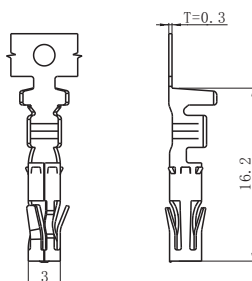
□ DL φ1.0-T



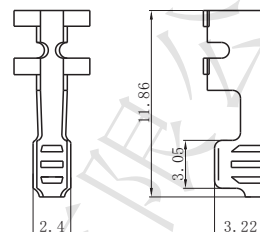
□ DL φ2.0-T



□ 八角端子

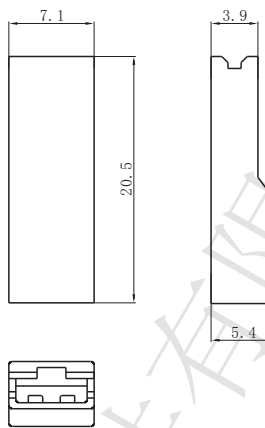


□ 750-50-13

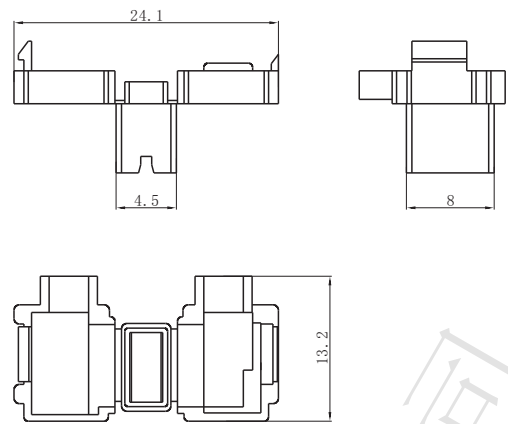


Model No. (型号)		Applicable wire (适用线规)		Material (材料)	Plating (电镀)	Qty/reel (数量/盘)
		mm ²	AWG#			
SIN-F-T	DLSINF011T	0.20~0.8	24~18	Phosphor bronze (磷青铜)	Tin plated (镀锡)	/
SIN-21T-1.8	DLSIN2121T	0.30~1.80	22~18	Brass (黄铜)		2500
DL φ1.0-T	DL7000116T	0.13~0.33	26~22	Phosphor bronze (磷青铜)	Gold plated (镀金)	/
DL φ2.0-T	DL7000216T	0.13~1.00	26~17	Phosphor bronze (磷青铜)		/
八角端子	DL3000011T	0.13~1.00	26~17	Phosphor bronze (磷青铜)	Tin plated (镀锡)	3500
750-50-13	DL7600151T	0.13~1.00	26~17	Nichrome (镍铬合金)	/	5000

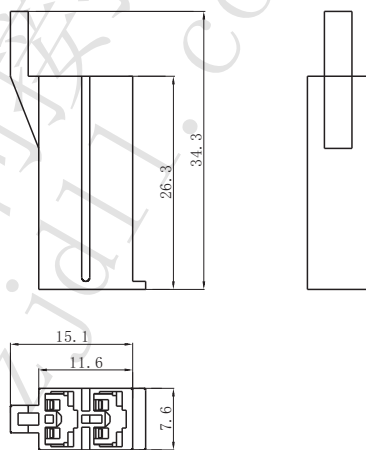
□ 187-1P硬护套



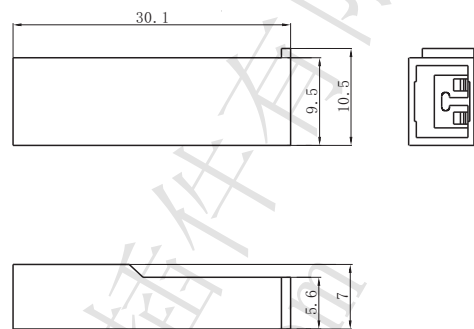
□ 187旗型硬护套



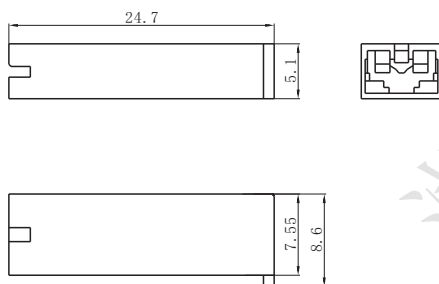
□ 187S-2C



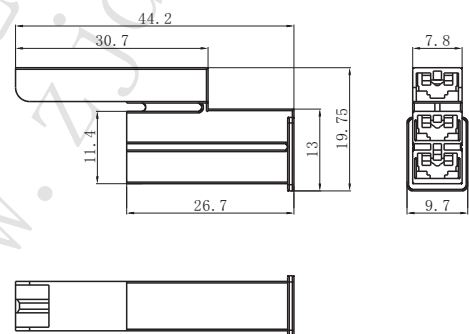
□ 187N-1P



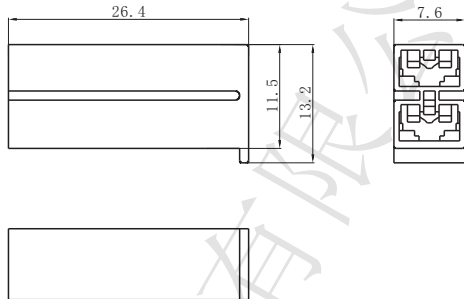
□ 630588B



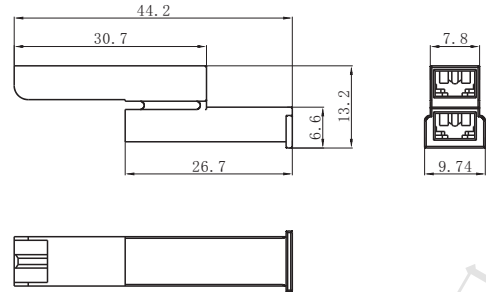
□ 630590



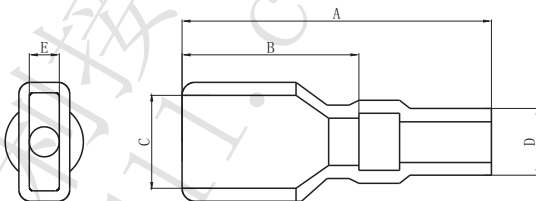
□ 630618



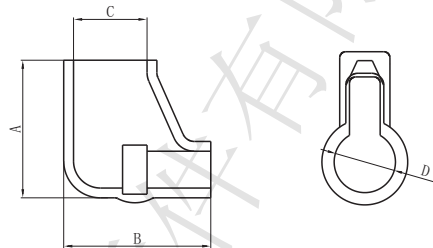
□ 630846



□ 187直软



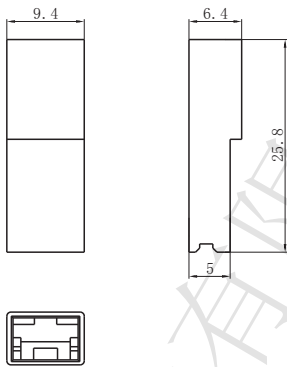
□ 187旗软



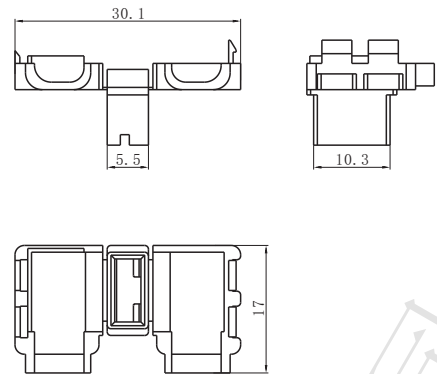
Model No. (型号)	Material (材料)	Suitable terminal (适配终端)	Model No. (型号)	Material (材料)	Suitable terminal (适配终端)
187-1P硬护套	DL1870111H	DL1871122T/DL1871222T/ DL1871322T	630588B	/	DL1871122T/DL1871222T/ DL1871322T
187旗型硬护套	DL1870211H	DL1873222T	630590	/	DL1871122T/DL1871222T/ DL1871322T
187S-2C	/	DL1871122T/DL1871222T/ DL1871322T	630618	/	DL1871122T/DL1871222T/ DL1871322T
187N-1P	/	DL1871122T/DL1871222T/ DL1871322T	630846	/	DL1871122T/DL1871222T/ DL1871322T

Model No. (型号)	Material (材料)	Specs (规格)	Dimensions (尺寸mm)					Suitable terminal (适配终端)	
			A	B	C	D	E		
187直软	DL1870181LH	PVC (聚氯乙烯)	φ2.5	22.0	15.0	6.0	φ2.5	2.5	DL1871122T DL1871222T DL1871322T
			φ3.0	22.0	15.0	6.0	φ3.0	2.5	
			φ3.2	22.0	15.0	6.0	φ3.2	2.5	
			φ3.5	22.0	15.0	6.0	φ3.5	2.5	
			φ4.0	22.0	15.0	6.0	φ4.0	2.5	
187旗软	DL1870281LH		φ3.0	13.0	6.4	5.60	φ3.0	/	DL1874221T
			φ3.5	16.1	6.3	5.60	φ3.5	/	

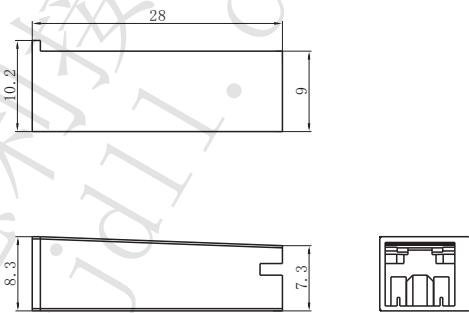
□ 250-1P硬护套



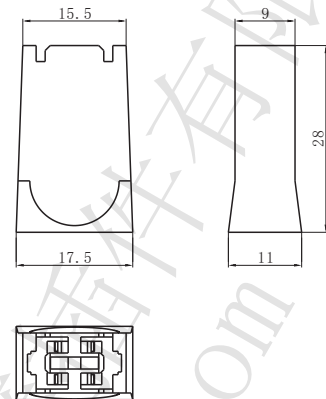
□ 250旗型硬护套



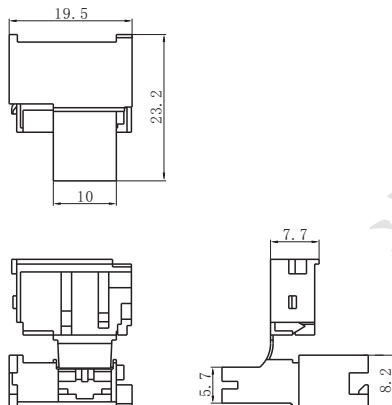
□ 250S-1P



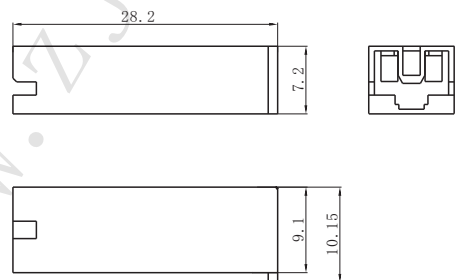
□ 250S-2B



□ 250S-SD

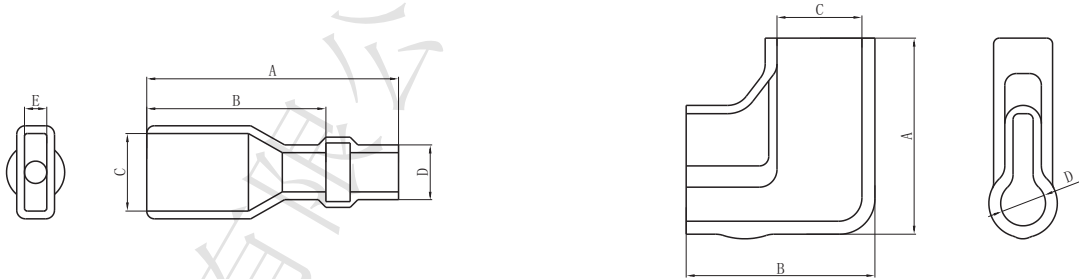


□ 360591



□ 250直软

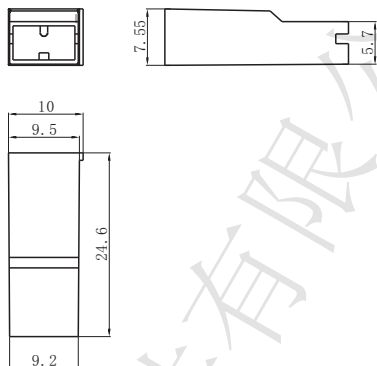
□ 250旗软



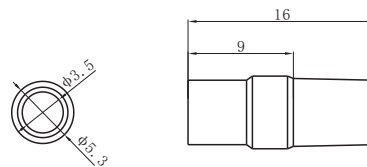
Model No. (型号)		Material (材料)	Suitable terminal (适配终端)	Model No. (型号)		Material (材料)	Suitable terminal (适配终端)
250-1P硬护套	DL2500111H	Nylon (尼龙)	DL2501122T/DL2501222T/ DL2501322T	250S-2B	/	Nylon (尼龙)	DL2501122T/DL2501222T/ DL2501322T
250旗型硬护套	DL2500211H		DL2503222T	250S-SD	/		DL2503222T
250S-1P	/		DL2501122T/DL2501222T/ DL2501322T	360591	/		DL2501122T/DL2501222T/ DL2501322T

Model No. (型号)	Material (材料)	Specs (规格)	Dimensions (尺寸mm)					Suitable terminal (适配终端)	
			A	B	C	D	E		
250直软	DL2500181LH	PVC (聚氯乙烯)	φ2.5	25.0	18.0	8.0	φ2.5	3.5	DL1871122T DL1871222T DL1871322T
			φ3.0	25.0	18.0	8.0	φ2.5	3.5	
			φ3.5	25.0	18.0	8.0	φ2.5	3.5	
			φ4.0	25.0	18.0	8.0	φ2.5	3.5	
			φ4.5	25.0	18.0	8.0	φ2.5	3.5	
			φ5.0	25.0	18.0	8.0	φ2.5	3.5	
250旗软	DL2500281LH		φ3.0	13.0	6.4	5.60	φ3.0	/	DL1874221T
			φ4.0	16.1	6.3	5.60	φ4.0	/	

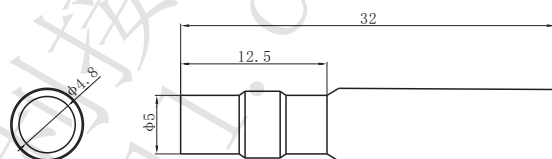
□ FJ250硬护套



□ 3.96子弹头短护套



□ 3.96子弹头长护套



Model No. (型号)		Material (材料)	Suitable terminal (适配终端)
FJ250硬护套	DL2500711H	Nylon (尼龙)	DL2507222T
3.96子弹头短护套	DL3960281LH	PVC (聚氯乙烯)	DL3961321PT
3.96子弹头长护套	DL3960181LH		DL3961221RT